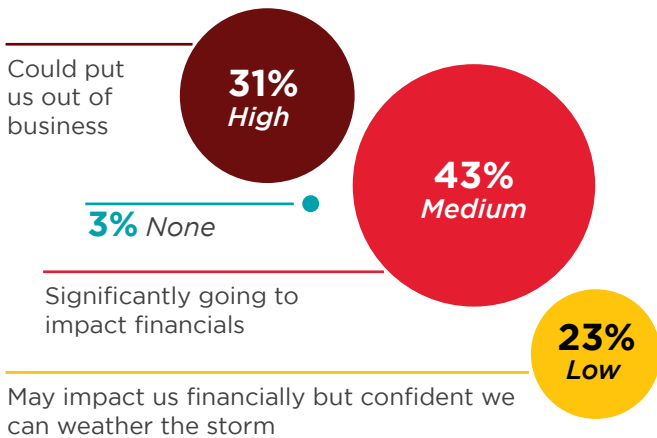


COVID-19 BUSINESS IMPACT SURVEY

Greater Sudbury - May 2020

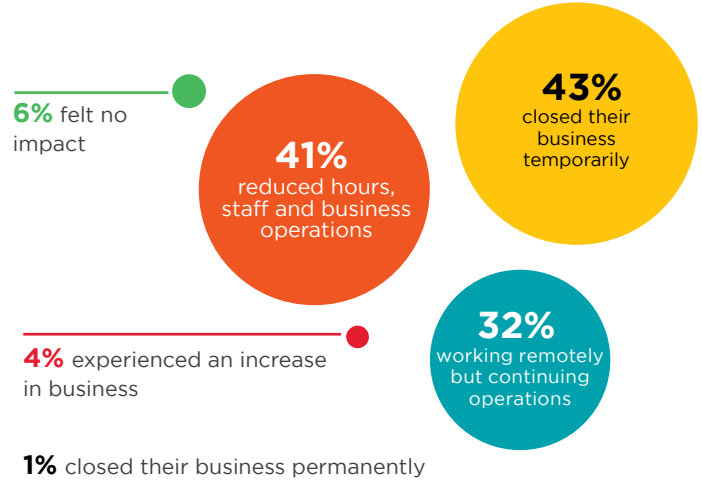


Strategic Risk Long-Term



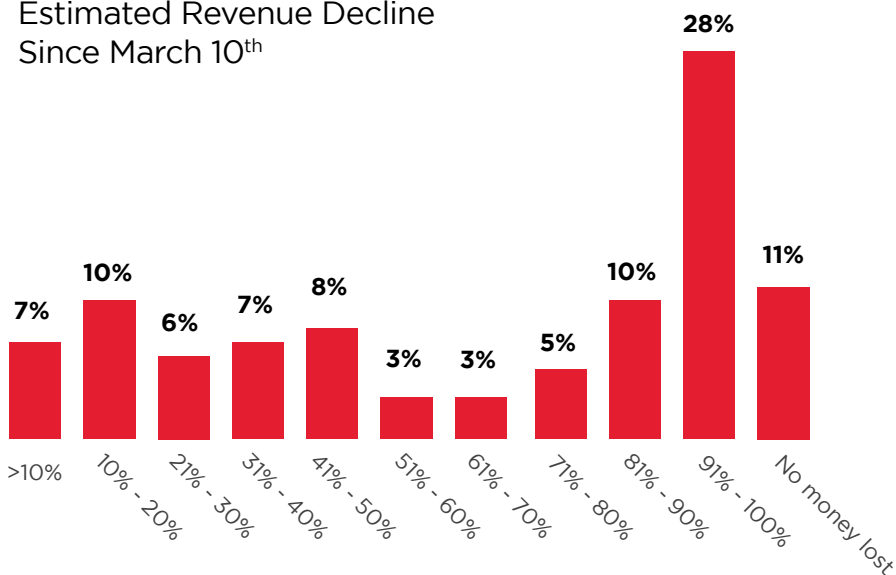
Number of respondents: 115

Impact on Operations



Number of respondents: 115

Estimated Revenue Decline Since March 10th



Number of respondents: 97

Employees Laid Off Since May 1st

643 Full-time Employees

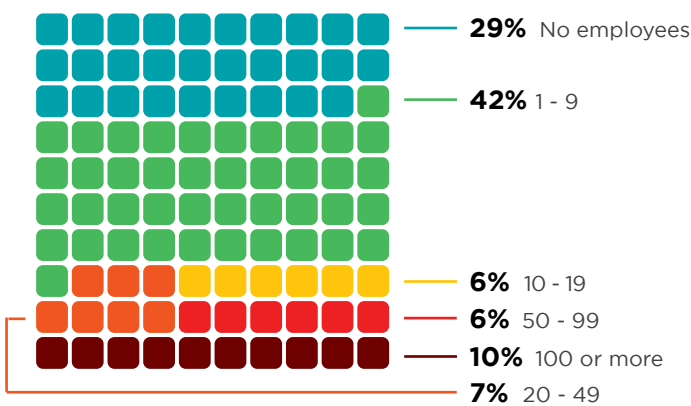
441 Part-time Employees

114 Seasonal Employees

207 Contract Employees

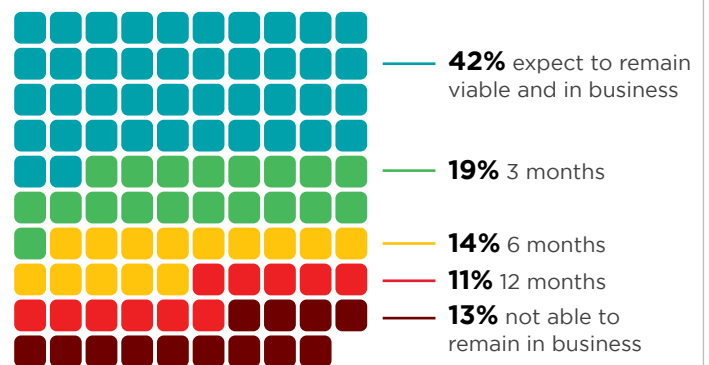
Number of respondents: 79

Size of Workforce May 1st



Number of respondents: 109

Projected Viability



Number of respondents: 99

See the full report here: www.planningourworkforce.ca

If you have any questions regarding the data in this survey please contact

INFO@PLANNINGOURWORKFORCE.CA